



STUDIO BABELSBERG

FILMING IN GERMANY

Production Service
Soft Money Incentives

STUDIOBABELSBERG.COM

PRODUCTION SERVICE

MARCH 2021

SOFT MONEY INCENTIVES

The German federal government as well as regional film funds support filmmakers by a one-of-a-kind film production rebate program totalling EUR 350 million.

The established German Federal Film Fund (DFFF) with its two columns DFFF I and DFFF II contributes annually EUR 120 million to stimulate production activities in the film industry. International producers can apply for a rebate of up to 25% for their spend on the ground.

With a yearly volume of EUR 30 million, the German Motion Picture Fund (GMPF) additionally supports the production of

internationally co-produced feature films, high-end series and VoD formats with large budgets. In addition, a number of regional film funds provide efficient support to productions of any budget. Many German states grant funds and additional soft money depending on the regional spend.

The German film production rebate is internationally recognized. Numerous well-known productions have benefited from the incentive program in the last years, among others *The Reader*, *Inglourious Basterds*, *The Grand Budapest Hotel*, *Bridge of Spies* or *The Hunger Games: Mockingjay*, and series as *Homeland*, *Berlin Station*, *Counterpart* and *Dark*.



Up to
25% Cash Rebate
plus regional
soft money



Studio Babelsberg is your reliable partner for all incentive, soft money and financing solutions

- Access the 25% rebate and regional subsidies
- Build cost-effective and reliable funding and financing structures
- Help with all governmental and institutional issues
- Cost-effective advice in all tax, insurance, employment and legal matters

More information on German film funding

German Federal Film Fund &
German Motion Picture Fund dfff-ffa.de

Download the brochure
Spotlight on Film Funding in Germany

Regional film funds "The Big Six"

Berlin-Brandenburg medienboard.de

Bavaria fff-bayern.de

Hamburg Schleswig-Holstein ffhsh.de

North-Rhine-Westphalia filmstiftung.de

Baden-Württemberg film.mfg.de

Middle-Germany (Saxony, Saxony-Anhalt, Thuringia) mdm-online.de

PRODUCTION SERVICE AND CREW

Studio Babelsberg Motion Pictures is a company set up to meet the exacting needs of any film project. We act either as a co-producer or experienced production partner supporting international and local producers with a complete set of services.

Germany has a deep, local skilled crew base. You can hire each position locally, which means enormous savings in travel, hotels and per diems. The crew in Germany can support several international productions at the same time.

We have successfully managed productions from high to low budget and we will find the perfect solution for your shooting plans in Germany and elsewhere.



Production Service includes

- Production Management
- Locations
- Permits
- Budgets
- Schedules
- Crew and Cast Hire
- Vendor Relationships
- Production Accounting
- Payroll Accounting
- VAT Reimbursement
- Insurance
- Co-production Structures
- Government and Institutional Relations
- Work Permits
- Banking
- Legal Advice
- Contracts



SOUND STAGES AND BACKLOTS

As the largest studio complex in Europe, Studio Babelsberg offers 21 sound stages, various backlots and exterior sets on a spacious 42-acre lot (173.000 m²). Whether you are looking for historical sound-proof stages or state-of-the-art VFX/SFX studios: 300,000 square feet are available for film productions. Each stage has production and support areas, including make-up and dressing rooms, storage areas and offices. The on-site office facilities and workshops ensure maximum production efficiency.

In addition, Studio Babelsberg features Germany's largest indoor water tank for water and underwater filming and permanent sets like a full-sized mock-up of a modern suburban train or a large exterior green screen wall. The extensive backlots are located immediately adjacent to the sound stages and offer various possibilities for additional set construction.



PRODUCTION FACILITIES OVERVIEW



MARLENE-DIETRICH-HALLE STAGES 1 – 3

Total area 5,400 m² / 58,117 sq ft
Max. height 14.30 m / 47 ft



TONKREUZ STAGES 4 – 7

Total area 2,100 m² / 22,604 sq ft
Max. height 10.10 m / 33 ft



BUILDING 3 STAGES 8 – 9

Total area 1,318 m² / 14,187 sq ft
Max. height 7.70 m / 25 ft



FX.CENTER BABELSBERG STAGES 10 – 12

Total area 1,115 m² / 12,000 sq ft
Max. height 10.00 m / 33 ft



FX.CENTER BABELSBERG STAGE 12 Volucap

Volumetric capture studio
Total area 173 m² / 1,866 sq ft



TV & MEDIA CENTER STAGES 14 – 17

Total area 2,956 m² / 31,818 sq ft
Max. height 11.50 m / 38 ft



NEUE FILM 1

STAGES 18 – 19 + Mock-Ups

Total area 6,673 m² / 71,828 sq ft
Max. height 14.30 m / 47 ft



NEUE FILM 2

STAGES 20 – 21 + Water Tank

Total area 8,229 m² / 88,576 sq ft
Max. height 10.30 m / 34 ft



WATER TANK

NEUE FILM 2

Dimensions 11 x 12 m / 36 ft x 39 ft
Max. depth 4.00 m / 13.12 ft



SUBURBAN TRAIN MOCK-UP

NEUE FILM 1

Size 18.00 x 3.10 m / 59 ft x 10 ft



METROPOLITAN BACKLOT

Total area 15,000 m² / 3.7 acres



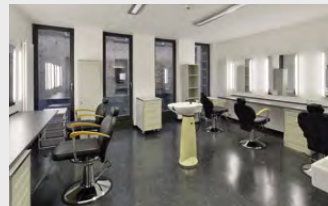
EXTERIOR GREEN SCREEN

Dimensions 63.2 x 10.5m
207.3 ft x 34.4 ft
Total area 6,000 m² / 64,583 sq ft



OPEN LOTS

Total area 36,000 m² / 9 acres



PRODUCTION OFFICES & FUNCTION ROOMS

Flexible production facilities for every department including make-up and hair rooms, dressing rooms and wardrobe, spacious storage and office space.

METROPOLITAN BACKLOT

The new Metropolitan Backlot set at Studio Babelsberg is among the most extensive in Europe. Four street settings in different architectural styles meet a wide range of locations, be it New York, London, Berlin or Paris.

From modern metropolitan areas to historic backdrops, the flexible modular construction combined with completely customizable surfaces and digital extensions can create any setting you need.

For more information please check our [METROPOLITAN BACKLOT brochure](#).

Technical Data

- 8,300 m² (2 acres) facades
- 5,000 m² (1.2 acres) cobbled and asphalt streets
- 3,000 m² (32,292 sq ft) scaffold structures for set extensions
- 12-15 m (39.4 - 49.2 ft) high
- Easy access to power and water
- Suitable for vehicles of up to 20 t
- 54 facades
- 600 doors and windows
- Several interiors and dividable courtyard





SET CONSTRUCTION

Our Construction Department is the technical heart of Studio Babelsberg. For almost 100 years, it has carried on the grand tradition of film architecture, a tradition that goes all the way back to such film classics as Metropolis or The Blue Angel.

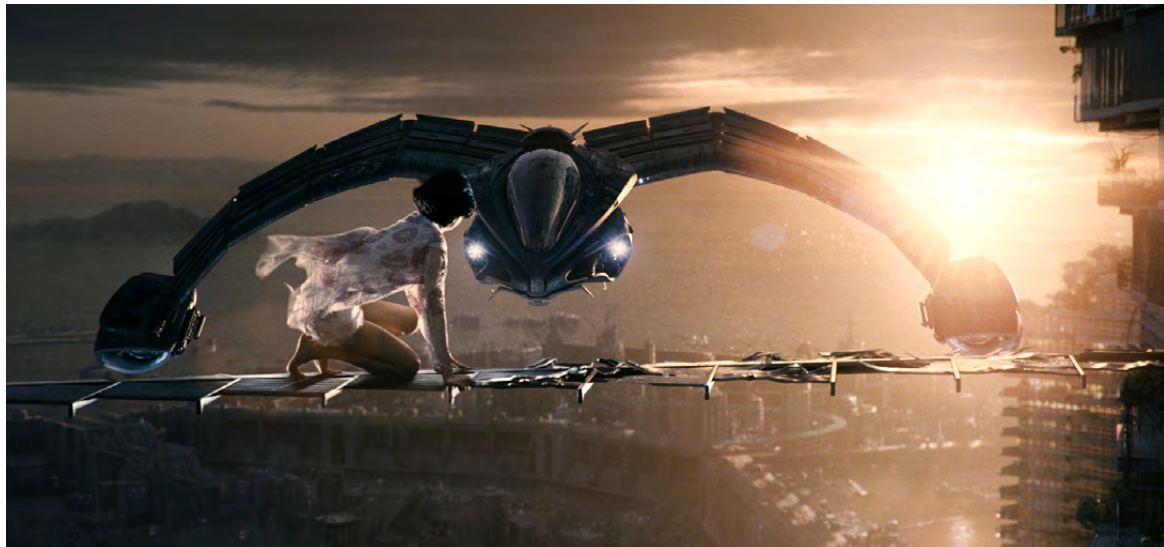
The unit includes modern workshops as well as pre-fabrication areas such as carpentry with high-tech CNC machining, molding & plastics engineering workshops featuring KUKA Robotics and 3D printing, as well as painter's and locksmith's workshops.

The on-site Construction Department reduces production and transportation costs. Build-up-and-knock-down processes are well organized and time efficient.



VFX COMPANIES IN GERMANY

Name	Locations	Website
Scanline VFX	Munich, Stuttgart	scanlinevfx.com
Pixomondo	Stuttgart, Frankfurt (Ffm)	pixomondo.com
Trixter	Berlin, Munich	trixter.de
Morro Images	Studio Babelsberg	morroimages.com
ARRI VFX Department	Berlin, Munich, Cologne, Frankfurt (Ffm), Halle	arrimedia.de
Sehsucht	Munich, Munich, Hamburg	sehsucht.de
Ambient Entertainment	Hannover	ambient-entertainment.de
The Light Works	Cologne	thelightworks.com
Rise (Visual Effects Studios)	Berlin, Munich, Stuttgart, Cologne	risefx.com
Mackevision	Munich, Stuttgart, Hamburg	mackevision.com
MPC (Moving Picture Company)	Berlin	moving-picture.com
Mark 13	Stuttgart	entertainment.mark13.com

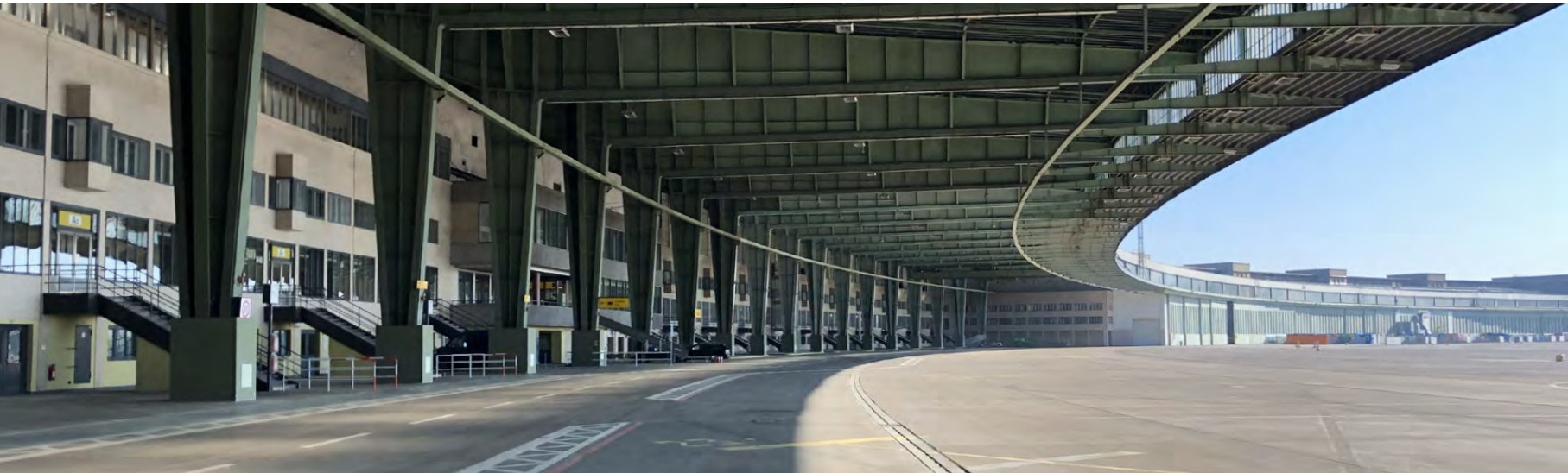


UNIQUE FILMING LOCATIONS

Germany is Europe's most diverse and historic film production region. It has almost every backdrop you can imagine: islands, sea, mountains and valleys, rivers and lakes, medieval ruins, castles, industrial centers, contemporary architecture and much more.

Studio Babelsberg's excellent location, only 30 mins from the city of Berlin with its diversity of film locations, combined with Germany's state-of-the-art infrastructure make Studio Babelsberg one of the most attractive production sites in Europe.







CONTACT

Studio Babelsberg Motion Pictures
August-Bebel-Str. 26 - 53
14482 Potsdam, Germany

Fon +49 331 7213151



Henning Molfenter
Managing Director

E-Mail henning.molfenter@sbmp.biz



Charlie Woebcken
Managing Director

E-Mail carl.woebcken@sbmp.biz



STUDIO BABELSBERG

STUDIOBABELSBERG.COM